



DMX 512 Master Controller LC-0DMX-D1-01



Description:

DMX512 main controller is specially designed for replacing traditional DMX console, and it can program various color scenes by simplified computer control software; control DMX slave device by computer control software, so make it more convenient to operate DMX and program.

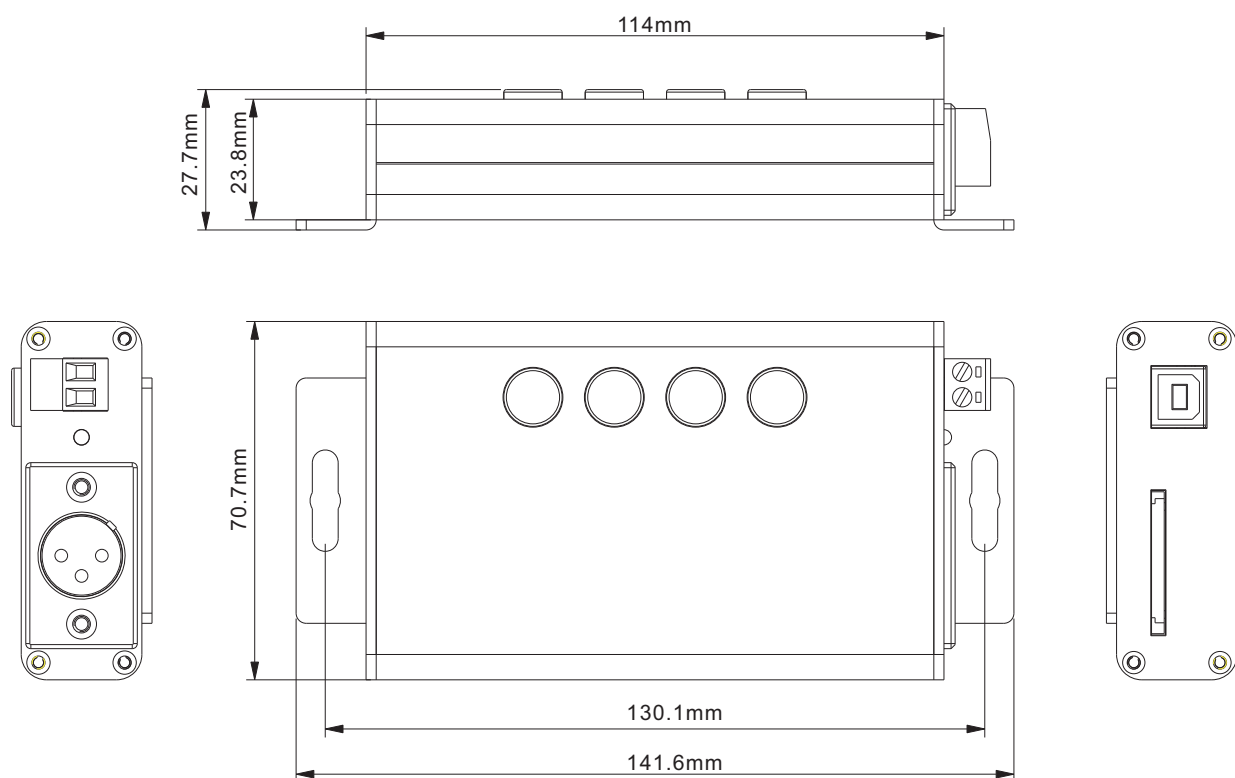
Features:

1. Convenient programming;
2. Small size and convenient;
3. Support SD card of 32G in maximum;
4. Connect to laptop via USB, and convenient to on-site debugging;
5. Conform to DMX-512/1990 international standards , 512 channel;
6. Scene mode can be downloaded from computer and be saved in SD card of controller.

Technical parameters:

Input voltage: 5V DC	Packing dimension of controller: L165*W120*H45MM
Output type: DMX-512/1990 International standard protocol	Packing weight of controller (gross weight): 290g
Working environment: Indoor	Outer carton dimension: L271.5*W224*H173MM
Waterproof level: IP20	Packing qty. of controller: 10PCS
Working temperature range: -30℃-55℃	Shipping weight of controller (gross weight): 3.25Kg

Dimension(mm):



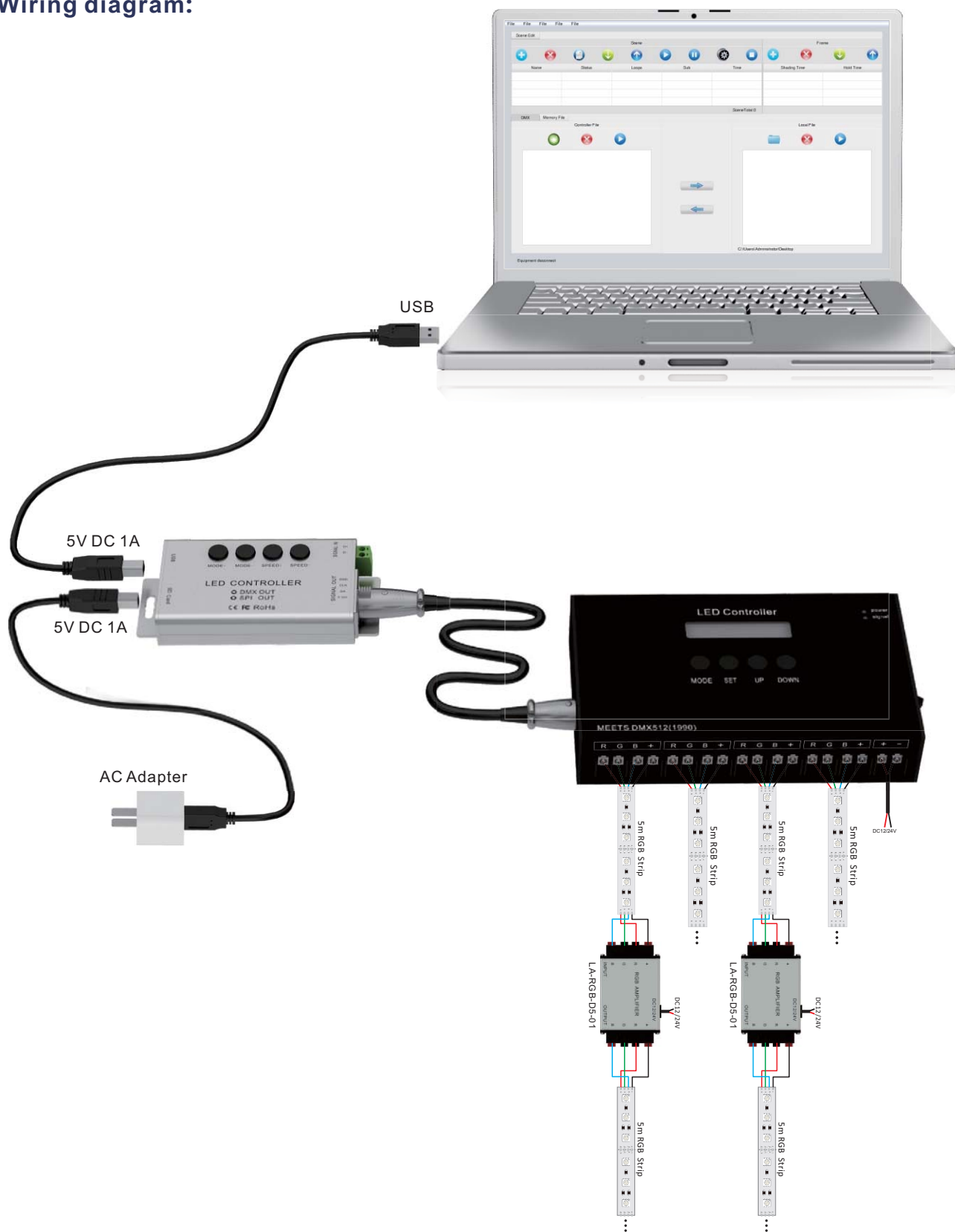
Key function of DMX 512 main controller:

MODE+: Scene increase MODE-: Scene decrease

MODE+: Speed increase MODE-: Speed decrease



Wiring diagram:





Operation instructions of DMX512 Main Controller Software:

1. Minimum computer configuration
 - 1) Hard disk 80G or above
 - 2) RAM 256M or above
 - 3) Windows 98 operating system or above
2. Software installation guide
 - 1) First intall USB driver
 - 2) Copy document to your computer,after open the file, you can use it.
3. Main interface (as figure 1,figure2)

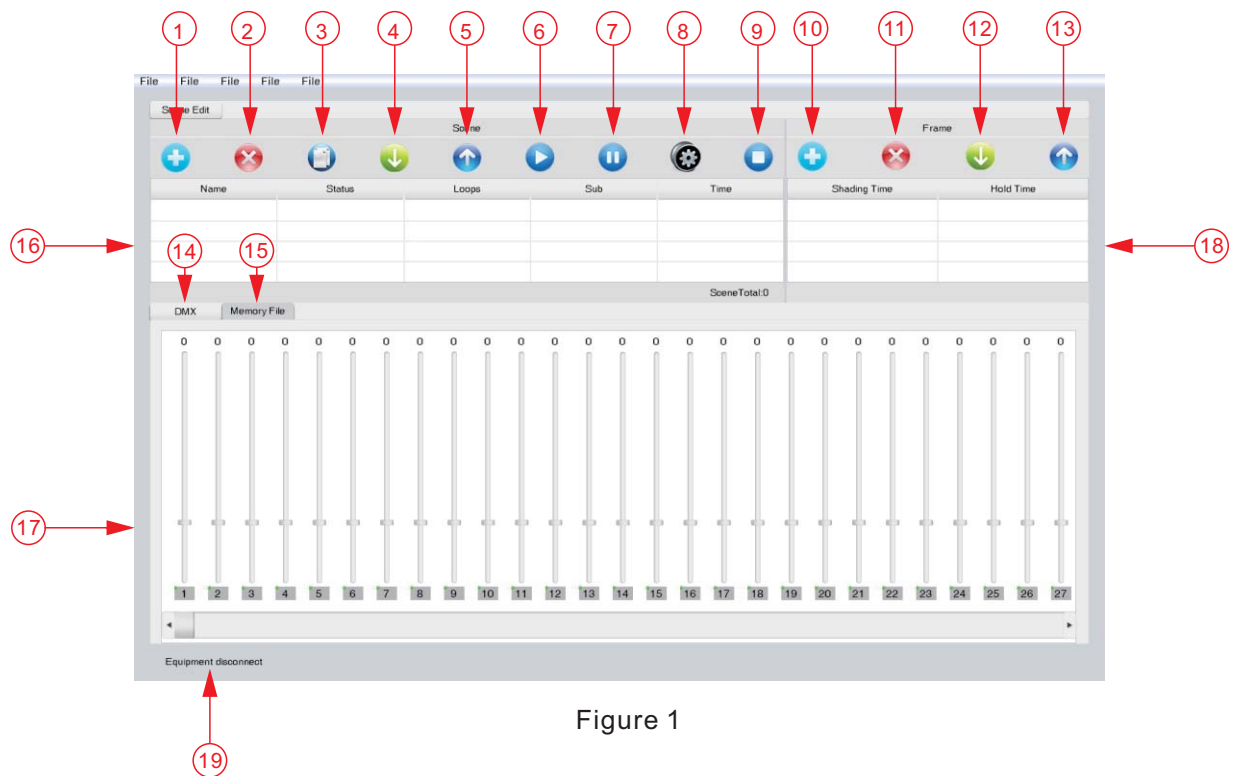


Figure 1

1.Create new scene	11. Delete subscenes
2.Delete scene	12. Subscenes move down
3.Copy scene	13 .Subscenes move up
4.Scene move down	14. DMX value slider page
5.Scene move up	15. When software is connected with USB DMX,the page list files in internal storage
6.Scene play	16. Scene editor area
7.Scene pause	17. DMX interface
8.Real-time control	18. Subscenes editing area
9. Play stop	19. Equipment connection state,indicate USB DMX interface is connected
10. Create subscenes	to computer correctly or not;

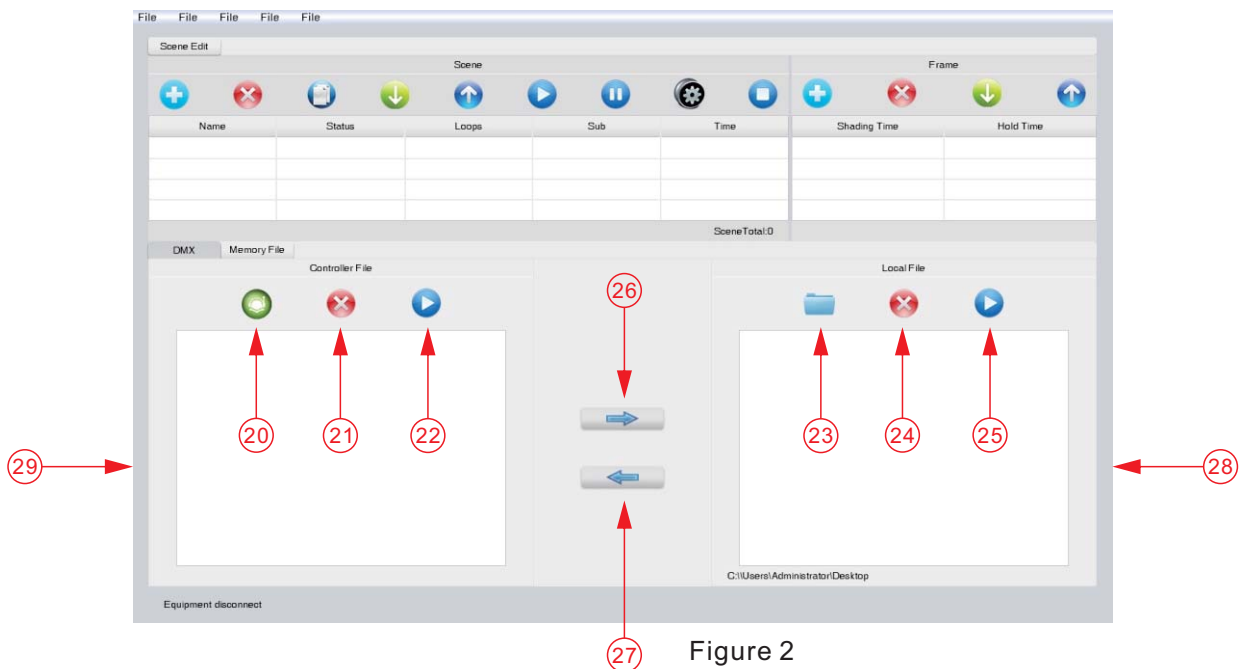


Figure 2

20. Read SD card files	25. Play local files
21. Delete SD card files	26. Download SD card scene files to computer
22. Play SD card files	27. Download scene files in computer to SD card
23. Open local files	29. Scene list in sd card
24. Delete local files	28. Scene list in computer

Operation steps:

1. How to realize real-time control

- 1) First click real-time control button(8);
- 2) Then slide draw slip up and down on DMX interface;

2. How to create scene, how to delete scene

- 1) Click to create scene button(1), double click the scene;
- 2) There is an edible subsce in subsce nes editing area;
- 3) Click the scene, then switch to DMX interface(17), choose the channel and brightness you want.
- 4) Double click parameters of Shading Time and Hold Time in subsce nes editing area, and the gradient time and duration time of the scene can be revised.
- 5) Choose parameters, then click File-save to save scece files.
- 6) Click main scene, cycle times of the scene can be chosen.
- 7) Then click scene display(6) to perform display, and click scene pause(7), it pause; click scene stop(9), it stop;
- 8) If want to create subsce nes, just click creat subsce nes(10) ;
- 9) If want to delete subsce nes, just click delete subsce nes(11);
- 10) If want to create main scene, just click creat main scene(1);
- 11) If want to delete main scene, just click delete main scene(2);



3. How to play local files;how to delete local files

- 1) Click and open local files(23),choose file holder which scene file locate, click confirmation;
- 2) Then scene files will appear in scene list(28);
- 3) Click selected file,and click play local file(25) to play scene file, click delete local file(24) to delete scene files.

4. How to realize transmission between files in computer and SD card

- 1) Click scene list(28) in computer, that is scene file which will be transmitted;
- 2) Click scene file in computer and download it toSD card(27) button ,wait for several seconds,the scene file can be transmitted to SD card;otherwise,choose scene file in SD card,click the scene file and download it to button of computer(26),wait for seconds,and the scene file can be transmitted from SD card to computer.

5.How to play SD card file, how to delete SD card file

- 1) Click and read file(20)button in SD card, and scene list in SD card will refresh all scene files in SD card;
- 2) Click and select scene file to be played, and click file(22) button in SD card to play scene; click file(21) button to delete scene;turn off control software in computer,and power DMX512 master controller, the master controller will automatically play scene file in SD card.

! Notice

1. The controller must be installed by professionals;
2. When installing the controller, first power off, then connect LED products with controller, after doing the right, then power on it;
3. The product is non-waterproof, please install and use it in dry environment;
4. Good cooling conditions will extend lifetime of controller, please install the product in well-ventilated environment;
5. Ensure input voltage conform to voltage range requirement of product;
6. Wire size used must be sufficient load connected and make sure wires are securely connected;
7. Before power on, ensure all wires are correctly connected to avoid lamps damage caused by wrong wiring;
8. If a failure occurs, don't repair without permission, please contact the manufacturer.