

Brightness and CCT Adjustable Wall Type Touch Controller (American Standard)

LC-000W-D4-03

Features:

Used for common anode white/warm white LED strip/lamp, built-in 16 preset patterns including dimming, jump change and gradual change, etc. Equipped with touch ring.

Technical Parameters:

Input Voltage: DC 12V-DC 24V

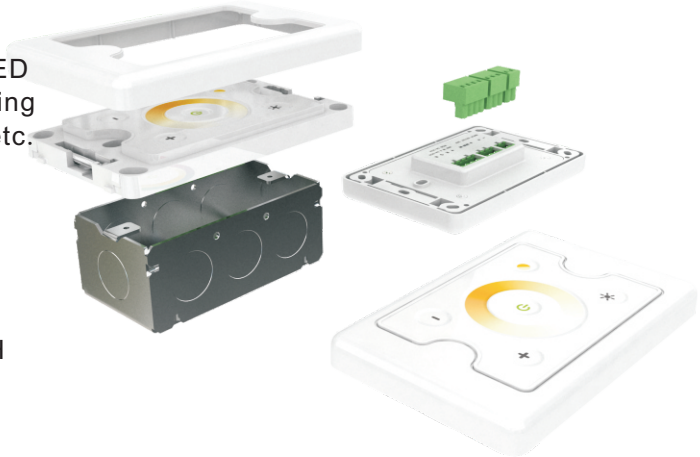
Output channel: 2 channels output:2A*4.5CH

Package size: 142*92*38mm

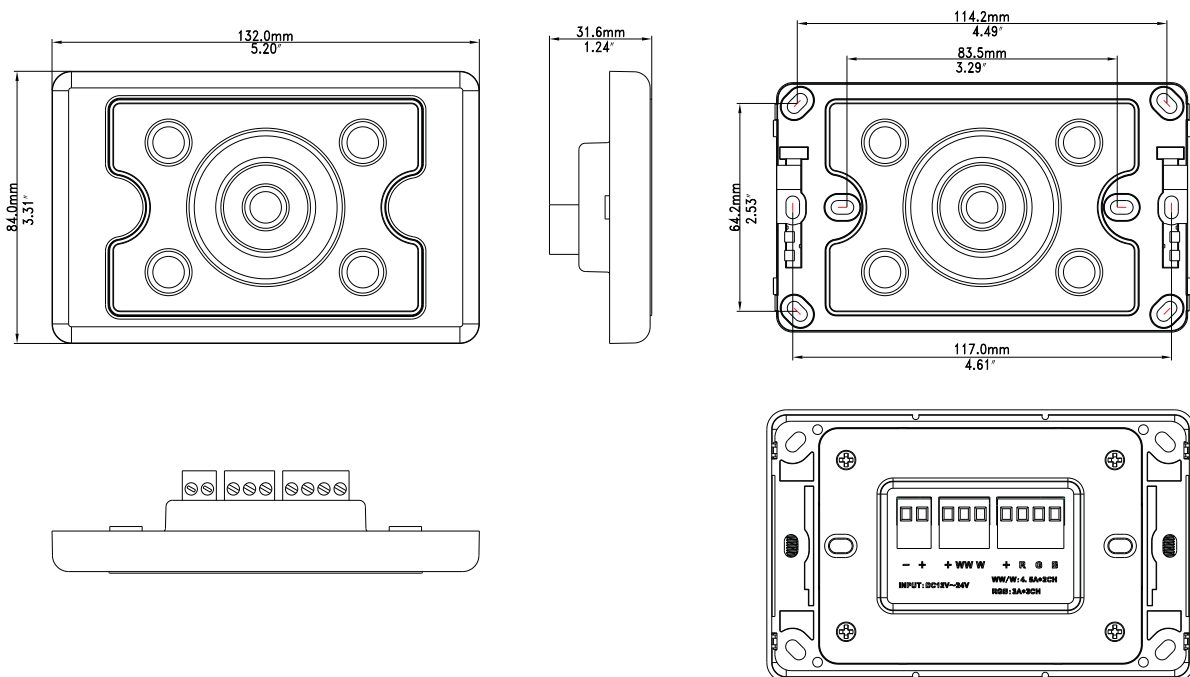
Gross weight: 165g

Functions:

1. Dimmable under static mode; Speed adjustable under dynamic mode.
2. Dimmable with 64 levels color touch ring.
3. Touch function with touch key and touch ring.
4. Power loss recovery function.
5. 16 preset patterns.



Dimensions(Unit: mm/inch) Net weight:120g



Patterns:

1. Static white
2. Static warm white
3. Static white/warm white
4. 3 colors jump change
5. White flicker change
6. Warm white flicker change
7. White/warm white flicker change
8. 3 colors flicker change
9. White gradual change
10. Warm white gradual change
11. White/warm white gradual change
12. 3 colors gradual change
13. White gradual change (light won't go off during changing)
14. Warm white gradual change (light won't go off during changing)
15. White/warm white gradual change (light won't go off during changing)
16. White/warm white alternately gradual change

Instructions:

(There is a LED indicate light under each button which we call background light here)

1. Touch key function:

– button: Decrease brightness, speed and pattern (brightness level: 256, speed level: 20, touch ring level: 65)

+ button: Increase brightness, speed and pattern

☼ button: Enter brightness adjust mode

● button: Enter pattern/speed adjust mode

⊕ button: Switch on/off

2. Function instructions:

– button: Decrease brightness, speed and pattern, continually adjust brightness, speed and pattern when long pressing. (Background light will flash once every time when touching the button). When brightness and speed is at minimum value the background light will be off.

+ button: Increase brightness, speed and pattern, continually adjust brightness, speed and pattern when long pressing. (Background light will flash once every time when touching the button). When brightness and speed is at maximum value the background light will be off.

☼ button: Enter brightness adjust mode when touching ☼ button, and background light will be on.

● button: Under static mode: Touch ● button, the background light will be on. Then press “+” or “-” to change pattern.

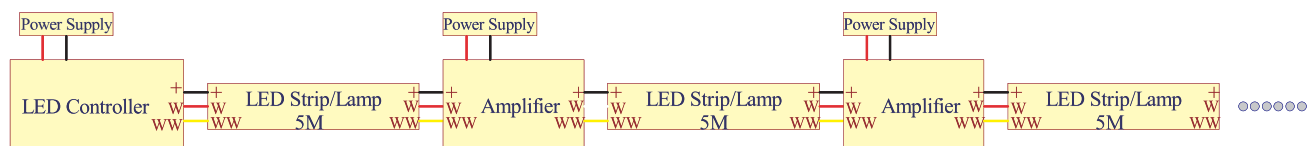
Under dynamic mode: Touch ● button once to enter speed adjust mode, then press “+” or “-” to adjust speed; Touch ● button again to enter pattern adjust mode, then press “+” or “-” to adjust pattern and it will cycle as above. Under speed adjust mode, ● button background light will be flickering. Under pattern adjust mode, ● button background light will stay lit.

⊕ button: Switch on/off (Background light will be on/off as switch off/on)

3. Recovery function:

Pattern, speed, brightness and ring color all have power loss recovery function.

Wiring diagram:



Warnings:

1. Output 2 channels, the wire sequence should not be reverse.
2. Please use DC 12–24V power supply, DO NOT use civil high voltage power supply directly.