

SC-WLS30/WLS60

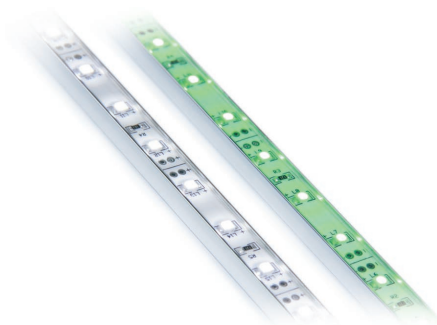
SLAS™ thinner, brighter.....

SLAS™ the new generation of Signcomplex LED strip for wet locations, made of high brightness SMD LEDs and aluminum profile.

Signcomplex offers standard lengths 60cm and 100cm. Custom length is also accepted with order q'ty 300 pieces. The standard packing material is PVC tube. Special or custom packing means, for instance, blister and gift box, is available upon request.

The encapsulation epoxy potting is not UV resistant unless an UV encapsulation is requested. Please consult our sales team for the extra cost.

Recommended usage temperature: -20°C-60°C.



More benefits with SLAS™

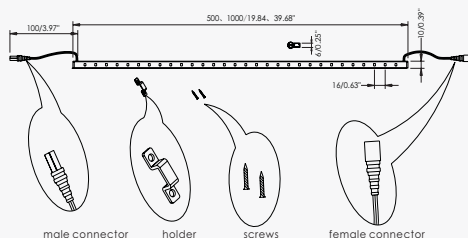
- Electronic components are encapsulated. It can fit into salty and wet locations.
- Compact size compatible with confined spaces.
- More brightness brings light flood effect.
- Easy connection and installation. No extra extrusion or front cover needed.
- Low temperature maintained.
- Low power consumption.

Applications

- Jewelry and watch display case
- Shop mood lighting
- Exhibition and event linear marking
- Cove lighting
- Cabinet and furniture contour lighting
- Billboard/signage backlight



Dimension drawing (Unit:mm/inch)

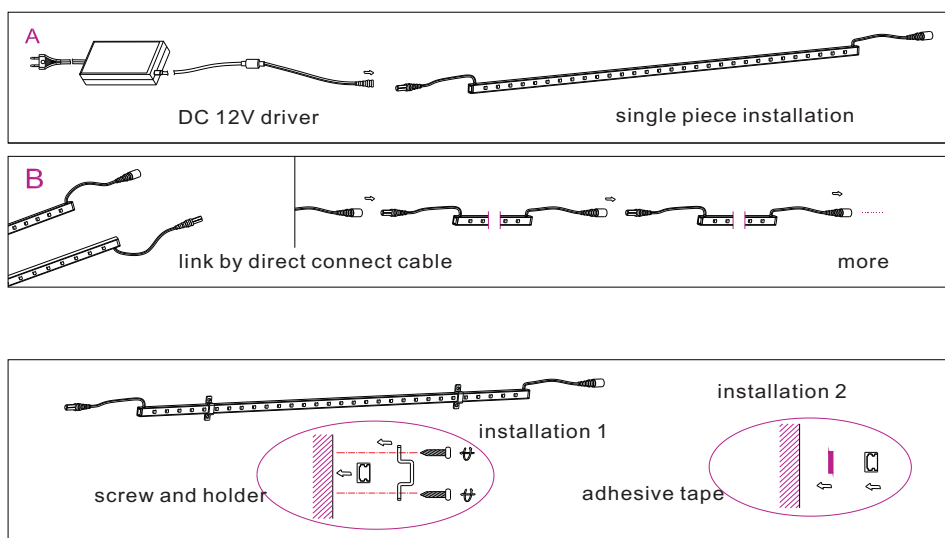


TYPE	30PCS 3528 LED	60PCS 3528 LED
L(MM)	500	1000

Technical parameters

Model Number	Color	Length (m)	LED Q' ty	LED Type	Light Output (lumen)	Beam Angle (degrees)	Voltage (V DC)	Current (Amps)	Max. Power Consumption (W)	IP	Continuous Connection (m)
SC-WLS30-R	Red	0.5	30	3528 SMD LED	120	120	12	0.2	2.4	65	5
SC-WLS30-Y	Yellow	0.5	30		100	120	12	0.2	2.4	65	7.5
SC-WLS30-B	Blue	0.5	30		50	120	12	0.2	2.4	65	7.5
SC-WLS30-G	Green	0.5	30		110	120	12	0.2	2.4	65	7.5
SC-WLS30-W	White	0.5	30		270	120	12	0.4	4.8	65	5
SC-WLS30-WW	Warm white	0.5	30		220	120	12	0.4	4.8	65	5
SC-WLS60-R	Red	1	60		240	120	12	0.4	4.8	65	5
SC-WLS60-Y	Yellow	1	60		200	120	12	0.4	4.8	65	7.5
SC-WLS60-B	Blue	1	60		100	120	12	0.4	4.8	65	7.5
SC-WLS60-G	Green	1	60		220	120	12	0.4	4.8	65	7.5
SC-WLS60-W	White	1	60		540	120	12	0.8	9.6	65	5
SC-WLS60-WW	Warm white	1	60		430	120	12	0.8	9.6	65	5

Linking operation



Safety Information

- The strip itself and all its components may not be mechanically stressed.
- Assembly must not damage or destroy conducting paths on the circuit board.
- Installation of LED ribbon (with power supplies) needs to be made with regard to all applicable electrical and safety standards. Only qualified personnel should be allowed to perform installations.
- Correct electrical polarity needs to be observed. Wrong polarity may destroy the strip.
- Parallel connection is highly recommended as safe electrical operation mode.
- Serial connection is not recommended. Unbalanced voltage drop can cause hazardous overload and damage the strip.
- Please ensure that the power supply is of adapters power to operate the total load.
- When mounting on metallic or otherwise conductive surfaces, there needs to be an electrical isolation points between strip and the mounting surface.
- Pay attention to standard ESD precautions when installing the strip.
- Damaged by corrosion will not be honored as a materials defect claim.

It is the user's responsibility to provide suitable protection against corrosive agents such as moisture and condensation and other harmful elements.