



LED Panel Light with Narrow Frame-Z Series

SC-PSC24W/N/CE5959-Z40W



Description

LED panel light with narrow frame, large light emitting area, suitable for school, shopping mall, hospital, office and other indoor places, the panel light can be widely used for its ceiling and suspended installation.

Features

1. Profile width of luminous surface is 8.5mm, and larger luminous surface;
2. Ceiling installation adopt built-in ceiling frame, thinner, no screws structure, and the lamp is stucked to ceiling, beautiful appearance;
3. Adopt premium aluminum cover ,excellent thermal management performance;
4. Three installation methods, suitable for flexible installation of many palces;
5. Can on/off frequently, no flicker and glare; good color rendering performance;
6. Compact appearance, novel design, easy to install and transport.

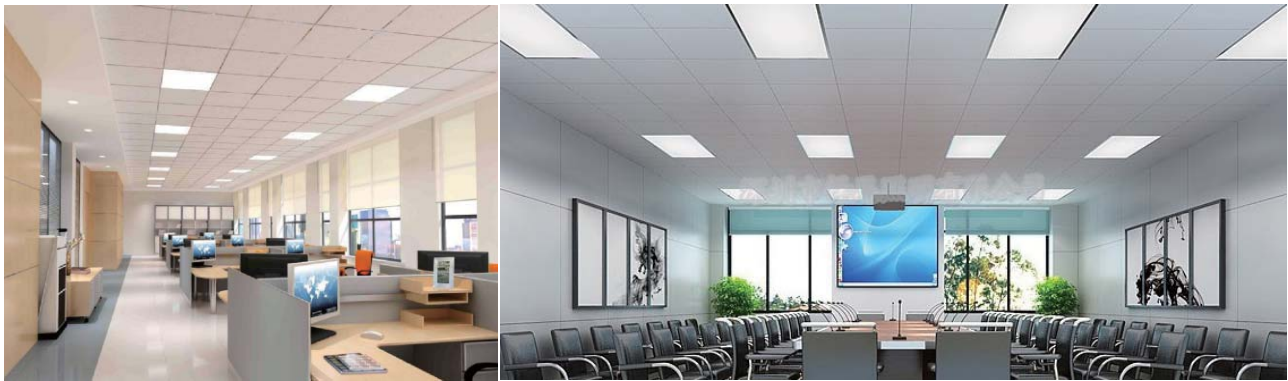


Specifications

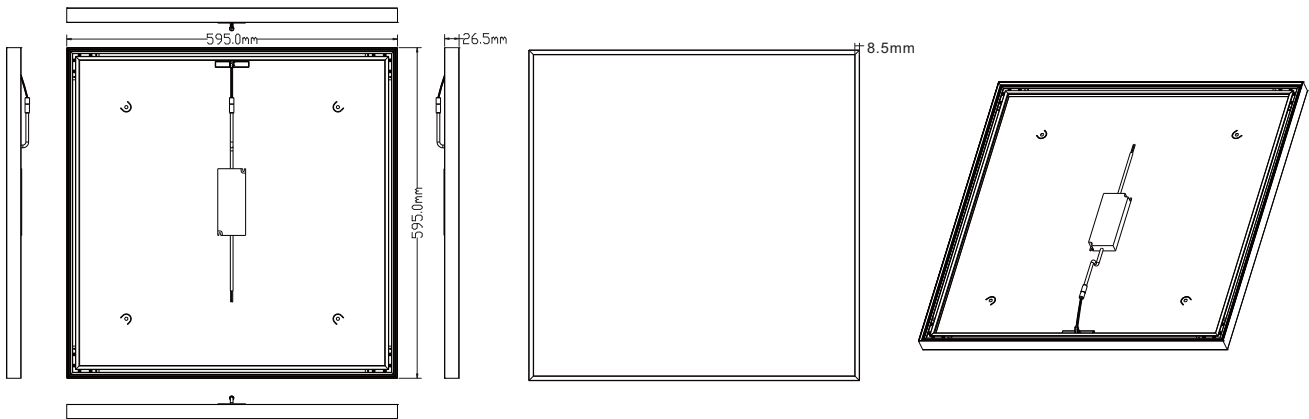
Model	CCT	Color	Lumen(lm) (±10%)	LED Type	LED Qty.	Beam angle	Power(W) (±10%)	Voltage (V)	Current (A)	CRI	PF
SC-PSC24WE5959-Z40W	2800-3200K	warm white	3400lm	SMD4014	192pcs	110°	40W	AC200-240V 50/60Hz	0.55	>80	>0.9
SC-PSC24NE5959-Z40W	3800-4200K	nature white	3800lm	SMD4014	192pcs	110°					
SC-PSC24CE5959-Z40W	6000-6500K	cool white	3600lm	SMD4014	192pcs	110°					

Applications

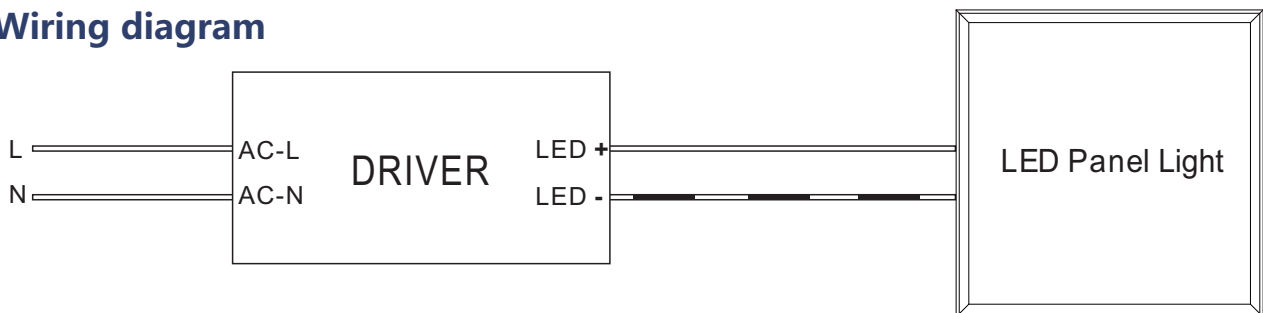
Suitable for school, shopping mall, hospital, office and other indoor places.



Dimensions (Unit: mm/inch)



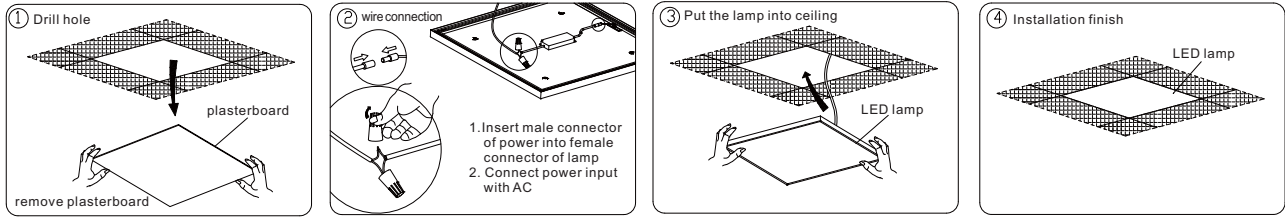
Wiring diagram



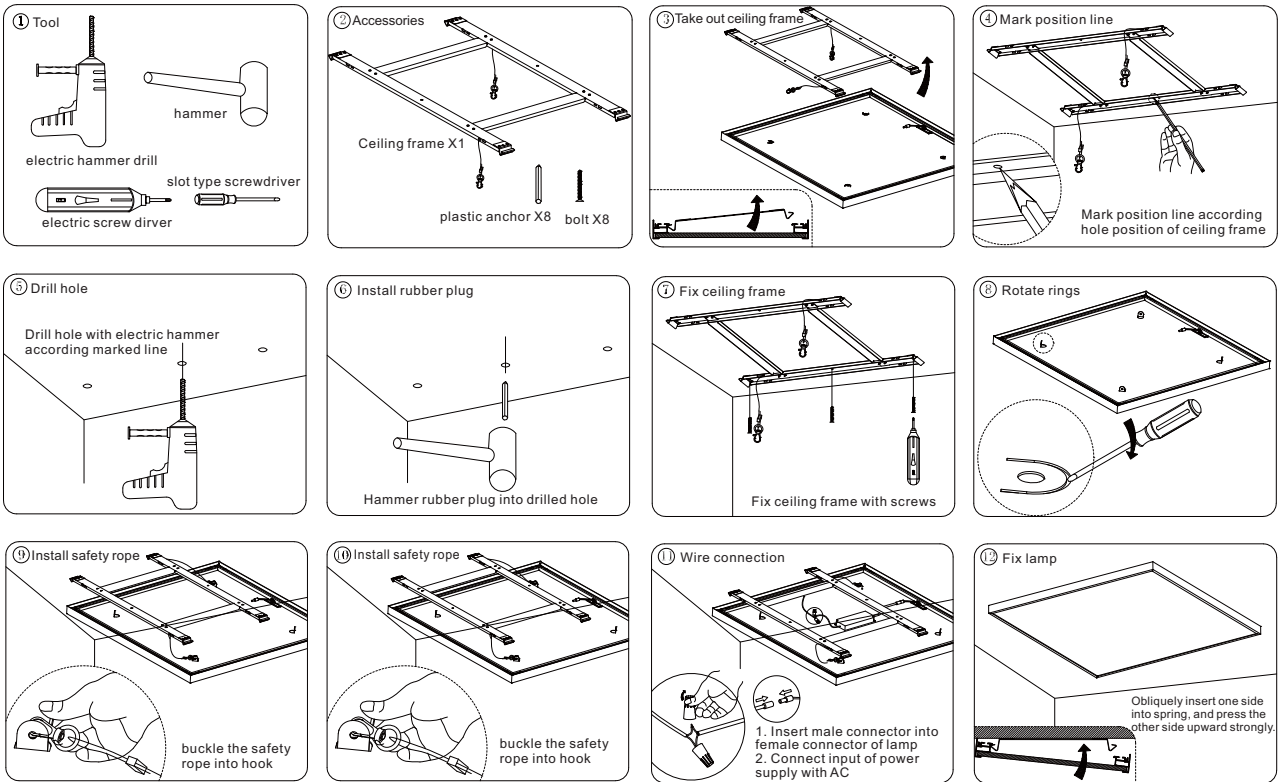


Installation Drawing

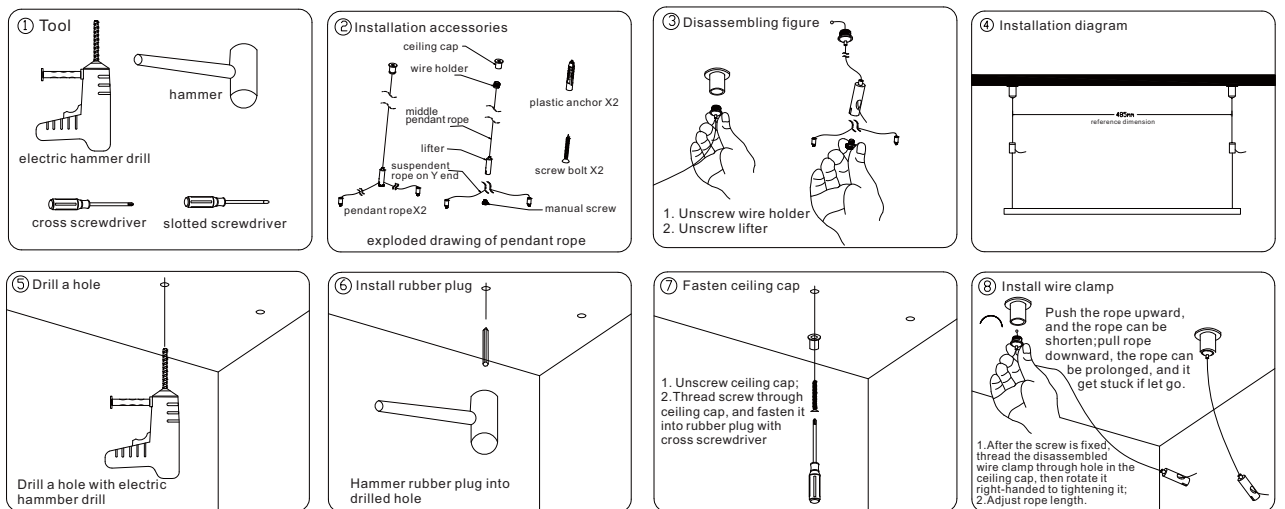
1. Embedded installation

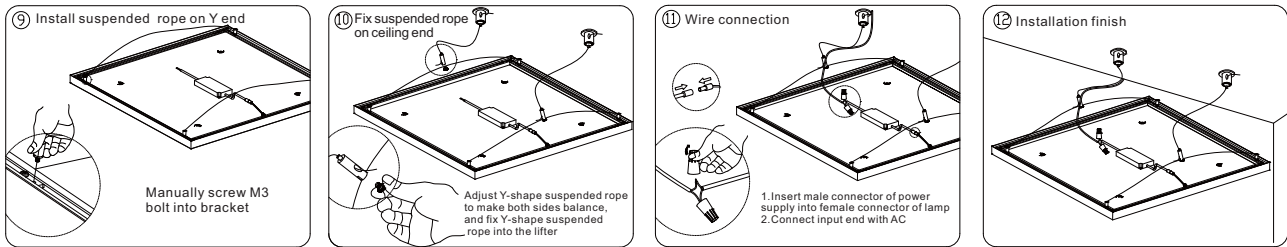


2. Ceiling installation



3. Suspended installation





Product packaging information:

Net weight:3.2kg

Gross weight:4.4kg

Accessories weight of suspended installation:0.2 Kg/set

Accessories weight of ceiling installation: 0.5 kg/set

Single packing dimension:660*690*60mm (1 pcs/box)

External packing dimension:720*290*685mm (4 pcs/carton, gross weight:17.6kg)

Installation requirement

1. Power off before installation;
2. During ceiling installation, press the spring to transformation, and buckle the lamp upward;

! Notice

1. Please first read the product specification carefully, make sure the using environment conform to specification, then it can be used;
2. Please confirm the input voltage,frequency before use;
3. This product must be installed by professionals;
4. If there is any damage to the power wire or shell of the product, it should be taken as defective product and do not use it;
5. Dangerous high voltage, non-professionals are not allowed to maintain the product;
6. If external soft cable or soft wire of the light is damaged, it should be replaced by manufacturer or service agent or personnel with similar qualification to avoid danger.