



## ST8 LED Tube with External Power Supply



### Description:

The LED tube adopts reliable and long lifetime LEDs, soft light, no glare, simple appearance. The shell all adopts high purity aluminum alloy (AL6063) and extrude molding, with electrostatic spraying on surface; via constant temperature curing, strong adhesion on spraying surface, the tube features high lumen, large lighting angle, novel structure, etc.

### Features:

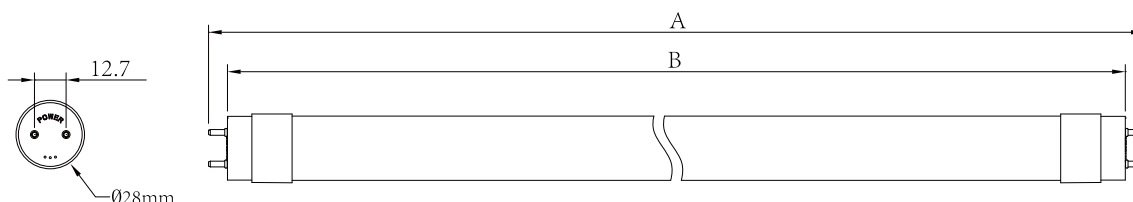
1. The LED tube is designed with external power supply, convenient to be disassembled and replaced;
2. Adopt high lumen 2835 LEDs, lighting efficiency of whole tube with transparent cover can be up to be 140LM/W;
3. Energy-saving, eco-friendly, no UV, IR or mercury, RoHS compliant;
4. Aluminum profile design, high impact-resistance, excellent thermal management performance, longer lifetime;
5. Transparent or milky lamp cover, high lighting efficiency, uniform luminous surface, no dark spot;
6. The LED tube is designed with external power supply to reduce heat, so LEDs and power supply work in low temperature, high stability of continuous working;
7. Driver can realize two, one, two, more convenient to install multiple LED tubes on panel, and reduce qty. of power supply;
8. Can on/off frequently, no flicker and glare; good CRI;
9. Compact appearance, novel design, the LED tube is packed in round paper tube, convenient to install and transport.



## Applications



## Dimensions (Unit: mm/inch)



|                       |                     |                     |
|-----------------------|---------------------|---------------------|
| A: 0. 6M=603mm/23. 7" | 1. 2M=1213mm/47. 7" | 1. 5M=1513mm/59. 5" |
| B: 0. 6M=588mm/23. 2" | 1. 2M=1198mm/47. 2" | 1. 5M=1498mm/59. 0" |

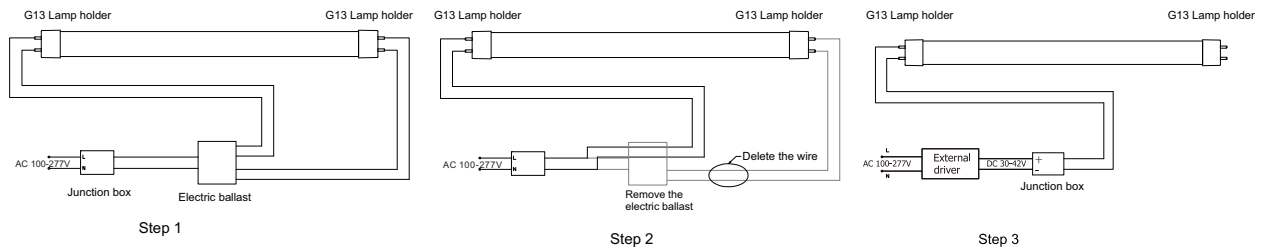
## Specifications

| Type    | Model number      | Color         | Light output<br>(lm±10%) | LED Type | Length<br>(cm) | Power<br>(W) | CRI | Voltage            | LED<br>Q'ty | PF   |
|---------|-------------------|---------------|--------------------------|----------|----------------|--------------|-----|--------------------|-------------|------|
| Frosted | ST8-009-AW-WW-07F | Warm White    | 1165                     | SMD 2835 | 60             | 9            | ≥80 | AC100-277V 50/60Hz | 96          | ≥0.9 |
|         | ST8-009-AW-NW-07F | Natural white | 1203                     |          |                |              |     |                    |             |      |
|         | ST8-009-AW-W-07F  | White         | 1207                     |          |                |              |     |                    |             |      |
|         | ST8-014-AW-WW-07F | Warm White    | 1887                     | SMD 2835 | 90             | 14           | ≥80 | AC100-277V 50/60Hz | 144         | ≥0.9 |
|         | ST8-014-AW-NW-07F | Natural white | 1985                     |          |                |              |     |                    |             |      |
|         | ST8-014-AW-W-07F  | White         | 1978                     |          |                |              |     |                    |             |      |
|         | ST8-018-AW-WW-07F | Warm White    | 2263                     | SMD 2835 | 120            | 18           | ≥80 | AC100-277V 50/60Hz | 192         | ≥0.9 |
|         | ST8-018-AW-NW-07F | Natural white | 2291                     |          |                |              |     |                    |             |      |
|         | ST8-018-AW-W-07F  | White         | 2335                     |          |                |              |     |                    |             |      |
|         | ST8-022-AW-WW-07F | Warm White    | 3159                     | SMD 2835 | 150            | 22           | ≥80 | AC100-277V 50/60Hz | 240         | ≥0.9 |
|         | ST8-022-AW-NW-07F | Natural white | 3303                     |          |                |              |     |                    |             |      |
|         | ST8-022-AW-W-07F  | White         | 3264                     |          |                |              |     |                    |             |      |
| Clear   | ST8-009-AW-WW-07C | Warm White    | 1259                     | SMD 2835 | 60             | 9            | ≥80 | AC100-277V 50/60Hz | 96          | ≥0.9 |
|         | ST8-009-AW-NW-07C | Natural white | 1314                     |          |                |              |     |                    |             |      |
|         | ST8-009-AW-W-07C  | White         | 1316                     |          |                |              |     |                    |             |      |
|         | ST8-014-AW-WW-07F | Warm White    | 2031                     | SMD 2835 | 90             | 14           | ≥80 | AC100-277V 50/60Hz | 144         | ≥0.9 |
|         | ST8-014-AW-NW-07F | Natural white | 2096                     |          |                |              |     |                    |             |      |
|         | ST8-014-AW-W-07F  | White         | 2173                     |          |                |              |     |                    |             |      |
|         | ST8-018-AW-WW-07C | Warm White    | 2580                     | SMD 2835 | 120            | 18           | ≥80 | AC100-277V 50/60Hz | 192         | ≥0.9 |
|         | ST8-018-AW-NW-07C | Natural white | 2850                     |          |                |              |     |                    |             |      |
|         | ST8-018-AW-W-01C  | White         | 2897                     |          |                |              |     |                    |             |      |
|         | ST8-022-AW-WW-07C | Warm White    | 3473                     | SMD 2835 | 150            | 22           | ≥80 | AC100-277V 50/60Hz | 240         | ≥0.9 |
|         | ST8-022-AW-NW-07C | Natural white | 3594                     |          |                |              |     |                    |             |      |
|         | ST8-022-AW-W-07C  | White         | 3693                     |          |                |              |     |                    |             |      |

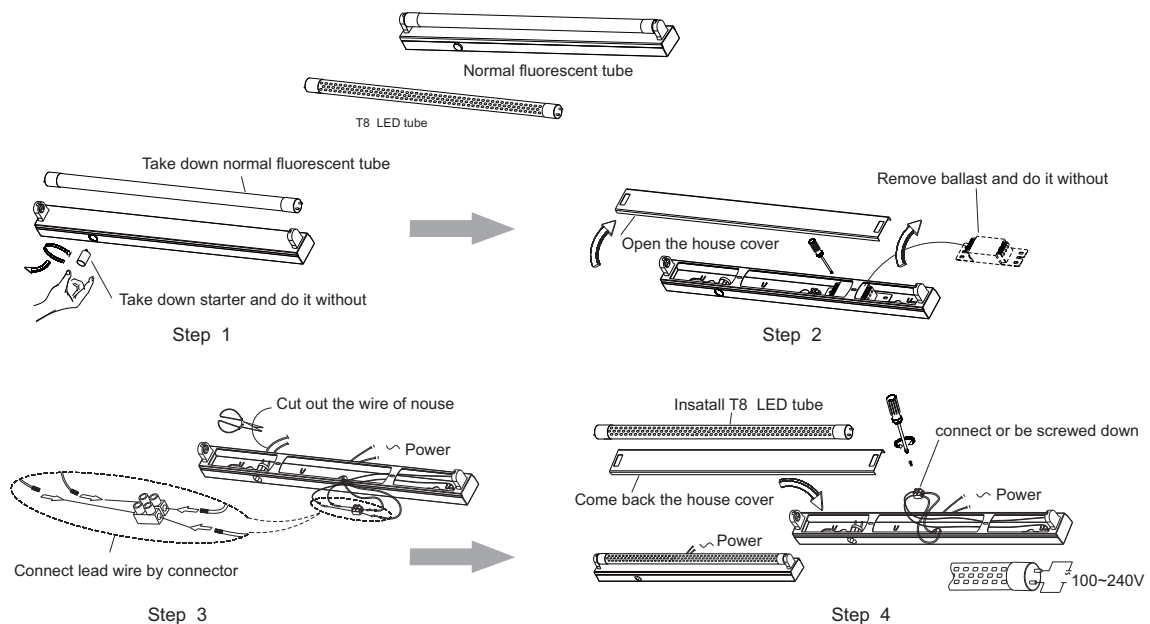
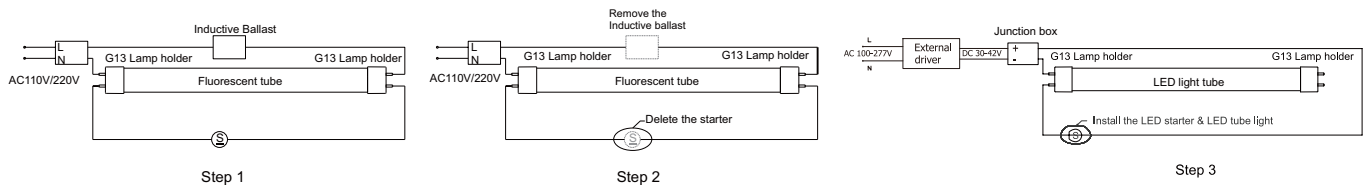


## Installation Drawing

### How to install LED Tube?



### Installation Inductive Ballast



## Installation requirement:

1. Power off before installation;
2. Remove electronic or inductive ballast during installation, and install LED tube in slot of G13 bracket; lead wire of single end or double end to output terminal of external power supply; and connect input terminal of external driver to L/N input terminal of tube bracket AC(100/220V);
3. Fix external driver into tube bracket to avoid sliding;
4. Remove traditional starter if there is inductive ballast.



## **Notice:**

1. Please read the specification first, to make sure the service environment matches the condition in the specification before using;
2. Please confirm input voltage, frequency before using;
3. The lamp must be installed by professionals;
4. If the exterior flexible cable or wire is damaged, it must exchange by the supplier, its agent or other similar qualified personnels to avoid dangers;
5. Dangerous high voltage, Non-professionals are not allowed to maintain the products;
6. Install LED tube into bracket, and the bracket circuit must be changed by professionals.