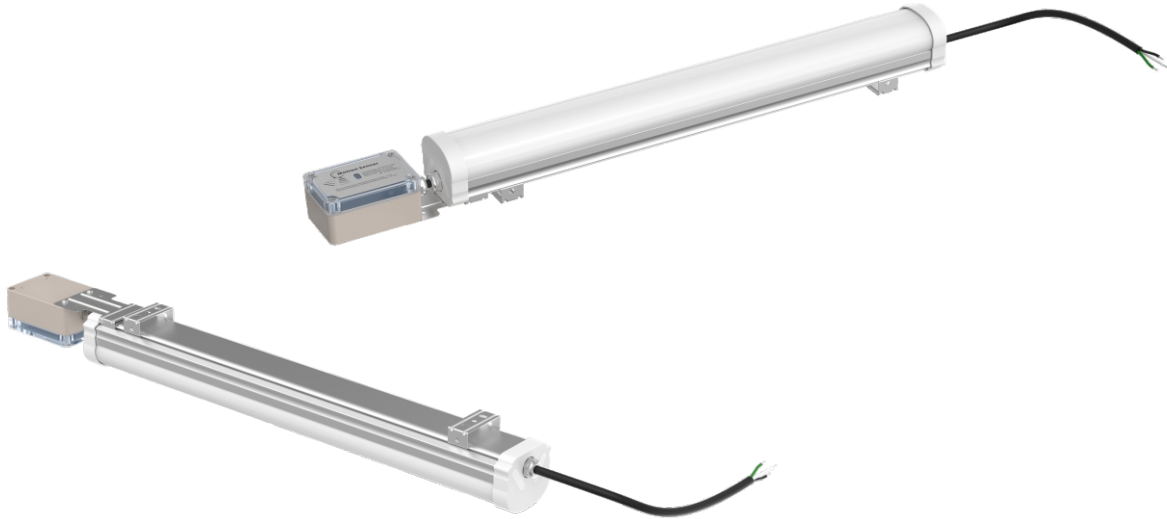




Sensor Tri-proof Lamp

TP-020/040/050-AW-B-011



Description

Sensor tri-proof lamp is innovative products which integrate Motion detector and LED power supply. The products supply a simple energy-saving solution for users. As all control parts are integrated in lamp housing, it is very easy to mount and save labor cost. External sensor make it can be installed in luminaries and NO DARK area when turn on the light. With innovative control technology, detection distance can be longer, up to 15m.

When lamp detect movement of object, the lamp will be full bright ; if lamp hasn't detected movement of object, after hold time the lamp will dim to a low light level, after stand-by period, lamp will switch off; and the lamp will be full bright when detect movable object again.

Features

1. Integration of Microwave motion sensor and LED power supply;
2. With external sensor, No DARK area of luminaries;
3. Automatic switching and dimming based on motion and light level;
4. Detection area, time delay and daylight threshold can be precisely set via our switch;
5. Wide detection area, range up to 16m in diameter;
6. Support higher mounting height 15m Max.;
7. Built-in daylight sensor.



Sensor introduction



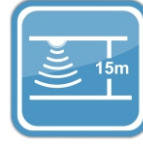
Max.8M



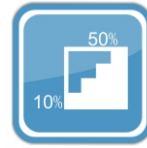
Light Sensor



Hold Time
10s-30min



Mounting Height
15m Max.



Automatic
Dimming

HF system	5.8GHz±75MHz, ISM wave band
Detection zone	Max.(D*H): 16m*15m
Detection sensitivity	10% / 50% / 75% / 100% (default setting: 75%)
Hold time	5S / 30S / 90S / 3min / 20min / 30min (default setting: 3min)
Daylight sensor	2lux / 5lux / 10lux / 25lux / 50lux / 100lux / Disable (default setting:Disable)
Stand-by period	0S / 5S / 5min / 10min / 30min / 1h / +∞ (default setting: +∞)
Stand-by dimming level	10% / 20% / 30% / 50% (default setting: 20%)
Mounting height	15M Max.
Motion detection	0.5~3m/s
Detection angle	150° (wall installation), 360° (ceiling installation).

Detection area

Detection area can be reduced by selecting the combination on the DIP switches to fit precisely each application

Hold time

Refers to the time period the lamp remains at 100% illumination after no motion detected.

Stand-by period

Refer to the time period the lamp remains at a low light level before it completely switch off in the long absence of people. When set to "+∞" mode, the low light is maintained until motion is detected.

Daylight sensor

The sensor can be set to only allow the lamp to illuminate below a defined ambient brightness threshold. When set to Disable mode, the daylight sensor will switch on the lamp when motion is detected regardless of ambient light level.

Note that daylight sensor is active only when lamp totally switches off.

Stand-by dimming level

The low light level you would like to have after the hold time in the long absence of people.



Optional Function

The tri-proof lamp provide ON-OFF Function, 3-step dimming function(100%→low light→off) , and 2-step dimming function(100%→low light(never turn off)). according to different applications. if lamp hasn't detected movement of object, after hold time the lamp will degrade to a low light level, lamp will switch off after stand-by period. And the lamp will be full bright when detect movable object again.



The sensor switches on the lamp when motion is detected



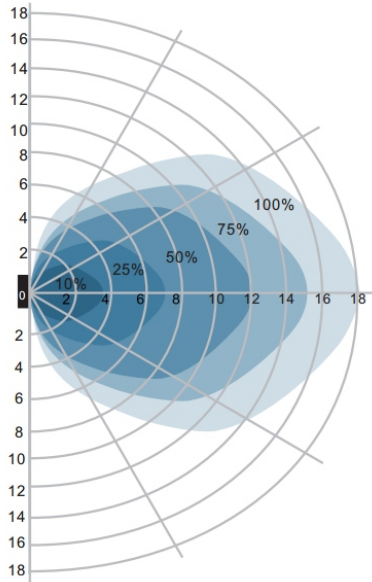
No motion is detected in detection area, lamp dim to a low light level after hold time.



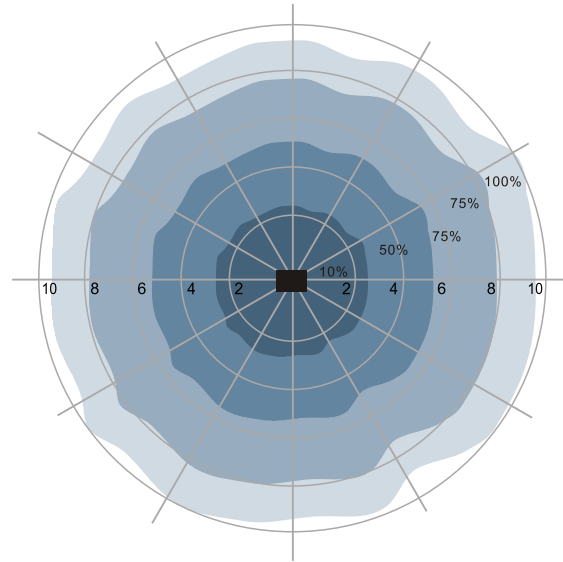
After stand- by period, the lamp switch off if no movement is detected in the detection zone.



Detection Pattern



Wall mounting pattern (Unit: m)
Suggested installation height: 1-2m



Ceiling mounting pattern (Unit: m)
Suggested installation height: 2.5-10

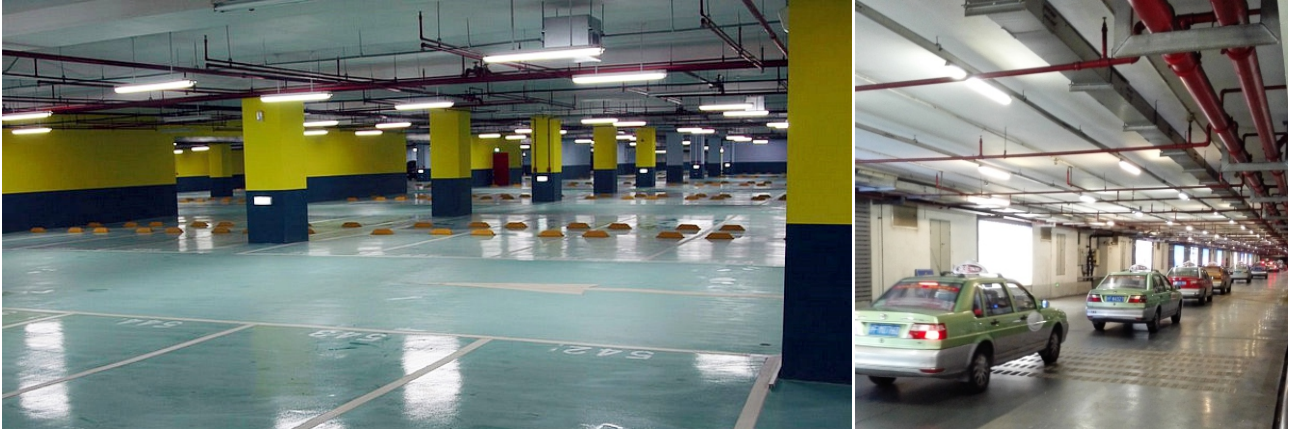
Specifications

Model	CCT	Color	Lumen(lm) (±10%)	Beam (angle)	LED Type Quantity	Power(w) (±10%)	Voltage, Frequency	CRI	PF
TP-020-AW-W-B-11	5500-6500K	White	2020	230°	SMD2835 144pcs	20	AC100-277V 50/60Hz	> 80	≥0.9
TP-020-AW-NW-B-11	4000-4500K	Neutral white	1930						
TP-020-AW-WW-B-11	2700-3200K	Warm white	1850						
TP-040-AW-W-B-11	5500-6500K	White	4040	230°	SMD2835 336pcs	40	AC100-277V 50/60Hz	> 80	≥0.9
TP-040-AW-NW-B-11	4000-4500K	Neutral white	3860						
TP-040-AW-WW-B-11	2700-3200K	Warm white	3830						
TP-050-AW-W-B-11	5500-6500K	White	4740	230°	SMD2835 384pcs	50	AC100-277V 50/60Hz	> 80	≥0.9
TP-050-AW-NW-B-11	4000-4500K	Neutral white	4370						
TP-050-AW-WW-B-11	2700-3200K	Warm white	4270						



Application

Suitable for warehouse, parking lot, shopping mall, farm, factory, cold storage, metro, underground passage and other places.



Packing and accessories information

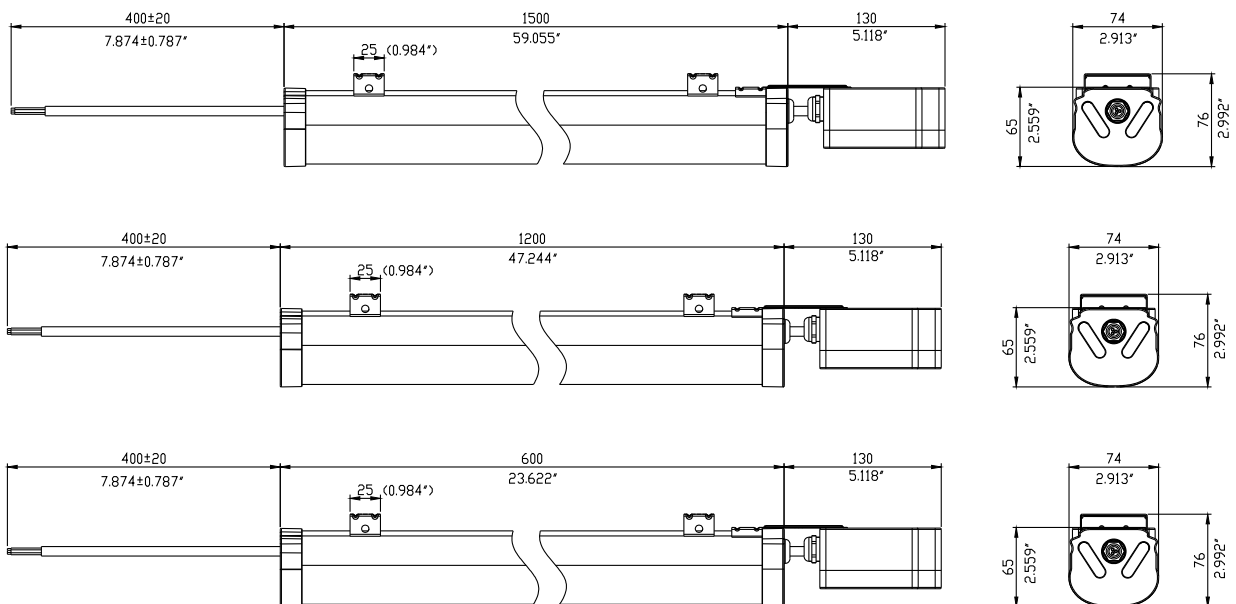
Net weight:2.38kg Gross weight:2.58kg

Single package dimension:1420*80*80mm

Outer carton dimension:1430*340*270mm,12pcs/caron (gross weight31kg)

Ceiling installation accessories (including 2 pieces mounting holder, 4 pieces self-tapping screws, plastic holder, M5 nut) For UL and seamless connection series, after calculate lamp qty., connect male head and end cover according 1 pcs/pair.

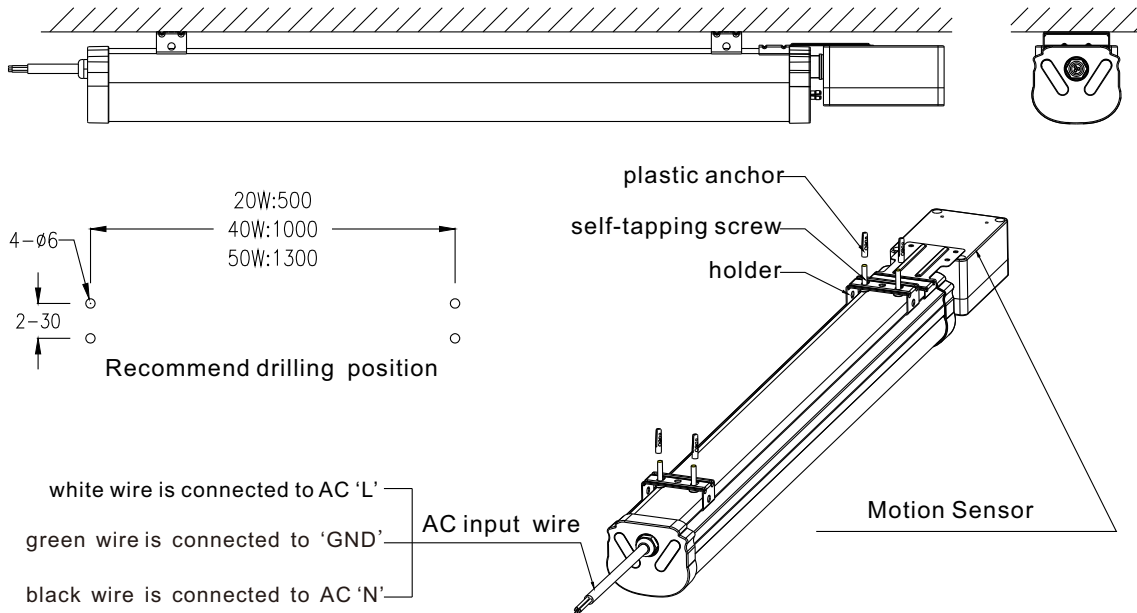
Dimensions (Unit: mm)



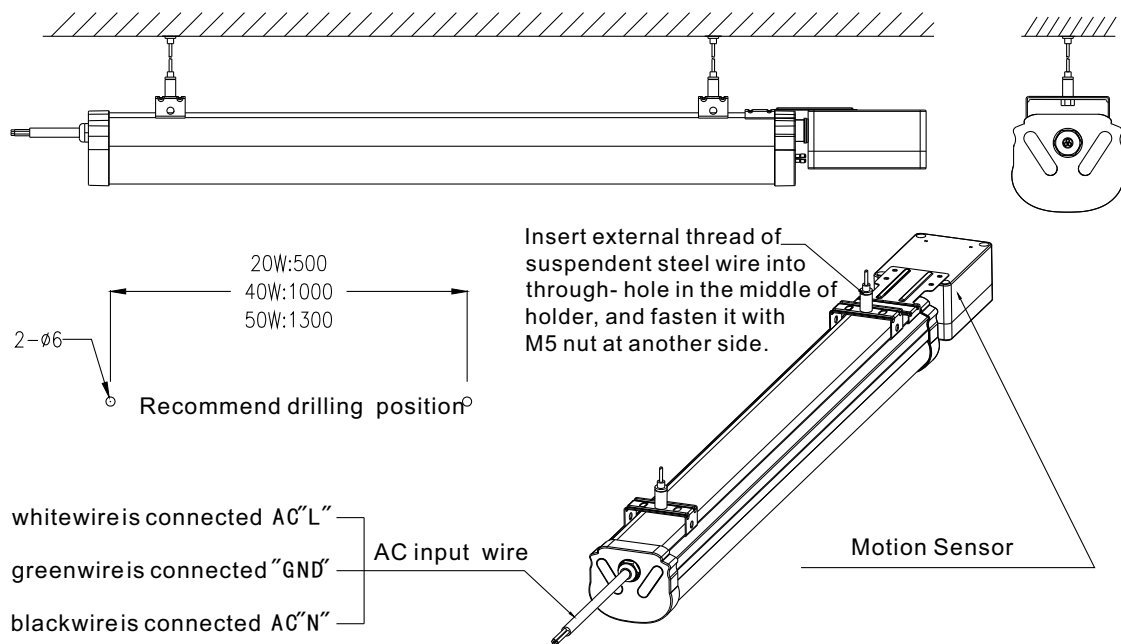


How to fix

Ceiling installation



Suspendent installation





Installation requirement

1. Power off before installation;
2. First make sure the installation material can endure the weight of lamp, securely fix the clip with plastic clamp and self-tapping screws on the installation surface, then snap the lamp into clip;
3. Connect the light wire to the wire of power supply, and process the joint with insulation sealing;
4. If you choose pendent installation, fix the steel wire on the installation surface, cross the M5 bolt of one end of steel wire through $\phi 5.5$ hole, and fasten with M5 nut at another end; snap the lamp into sanp, finally adjust the length of steel wire to prevent losing and falling.

Notice

1. Please first read the product specification carefully, make sure the using environment conform to specification, then it can be used;
2. Please confirm the input voltage, frequency before use;
3. This product must be installed by professionals;
4. If there is any damage to the power wire or shell of the product, it should be taken as defective product and do not use it;
5. Dangerous high voltage, non-professionals are not allowed to maintain the product; If external soft cable or soft wire of the light is damaged, it should be replaced by manufacture or service agent or personnel with similar qualification to avoid danger.